



BILL OF MATERIALS

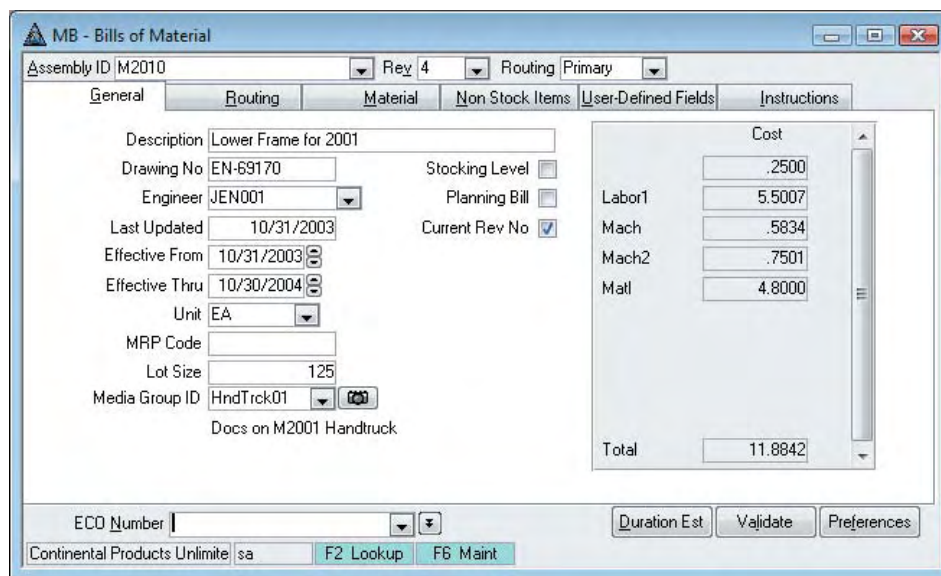
A comprehensive base for a complete, easy-to-use manufacturing solution

The key to a successful manufacturing software implementation begins with the Bill of Materials. A Bill of Materials (BOM) defines the product structure in terms of materials and provides an optional connection to plant resources such as machinery, tooling, and labor defined by a bill of routing. The Bill of Materials application provides a solid base for production activity to be defined, tracked and reviewed. It also enables more advanced software such as MRP and CRP to be properly utilized. TRAVERSE Manufacturing Bill of Materials is the place to start.

The software functionality provided gives you the tools you'll need to define both the simplest and most complex bills of material. Designed to allow you to start simple and build from there, the maintenance of the bills of material provides advanced features such as detailed routing, multiple routing definition, mixed unit of measure, cross group costing, scrap tracking, and total visual documentation.

Revision numbers, effective dates, and drawing numbers help to further define the BOM. You'll find that the sophisticated feature set built into this product is comparable to software that is priced substantially higher, yet, you can set up simple, material-only bills quickly and with minimal work.

Features like a text file import enable you to bring engineering bills directly into your current BOM database. Standard cost maintenance, global component replacement, BOM change history, and a variety of inquiry functions give you automated update abilities and quick access to vital information.



The Bill of Materials module offers a robust set of built-in features. Cost grouping enables you to break down bill of material costs the way you want.



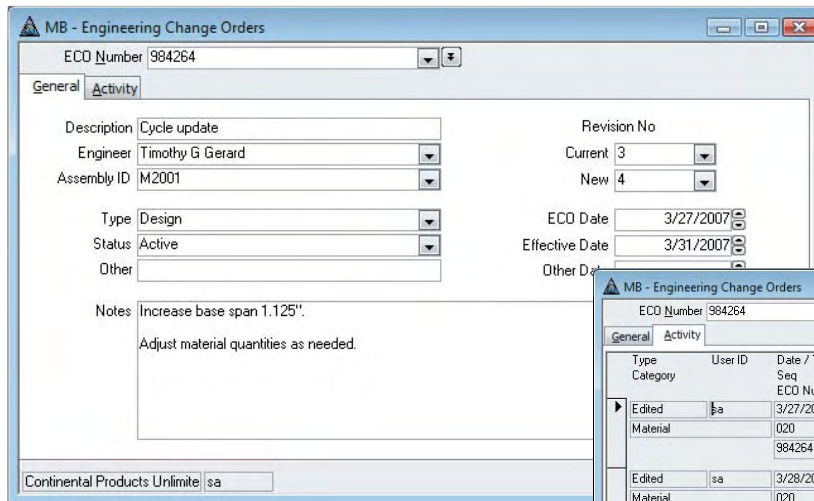
900 Wind River Lane, Suite 102, Gaithersburg, MD 20878
Phone 1-800-451-7447 or visit www.osasonline.com

Bill of Materials Features:

- insight into current and future availability with Available to Promise and Component Availability
- visual drill-down into existing bills of material
- use stock or non-stock components
- attach media objects for videos or pictures of assemblies
- global replacement of components
- user-defined cost groupings
- optional routing definition
- tracking of engineering change history
- various user-defined fields for each assembly
- copy from functionality to ease setup of new bills
- engineer name, revision numbers, drawing numbers, effective dates
- engineering change order (ECO) tracking
- provision for planning bills and stocked bills
- unique configuration of labor and machine time for each bill (if interfaced to Routing & Resources application)
- extensive comments and descriptive notes areas
- provides for import of ASCII files
- handles scrap percentages
- process overlap enabled (if interfaced to MR application)
- advanced online inquires
- multiple units of measure
- comprehensive standard cost management with G/L interface
- standard, LIFO, FIFO, and average costing
- handles lot tracked and serialized inventory

Bill of Materials Reports:

- Costed Bill of Material
- Component Where Used
- Component Availability
- Bill of Material Change History
- Indented Bill of Material
- Summarized Bill of Material
- Bill of Material Worksheets
- Bill of Materials List
- Options Setting List
- Cost Groups List
- Employees List



Manage all of your product changes using the Engineering Change Orders function.

