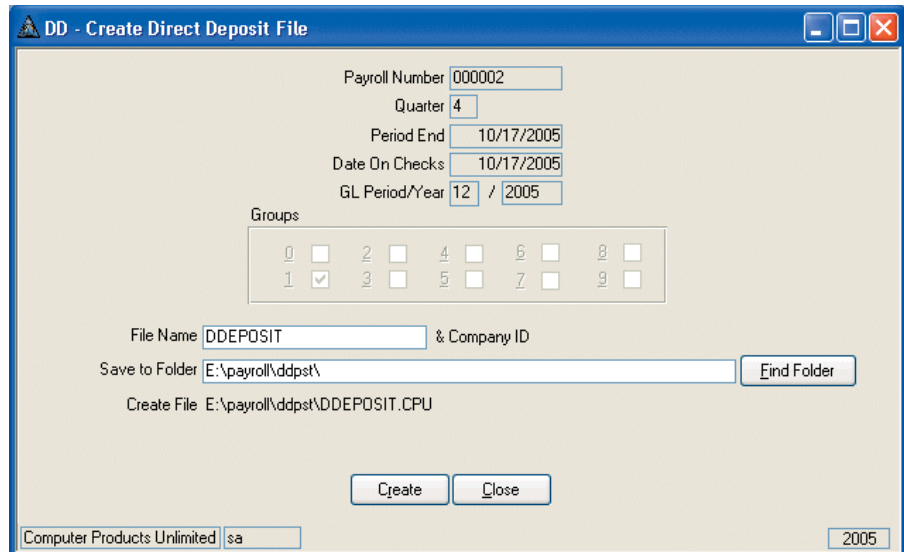




## Additional Direct Deposit Features:

- vouchers replace a "live" check, ensuring that a pay check cannot be lost or stolen
- deposits may be created by dollar amounts or percentages, and the information can be changed at any time once a test run or "prenote" has been approved by the bank
- process multiple checks per employee in one Direct Deposit run
- print checks and then print Direct Deposit vouchers for the checks being deposited
- the Edit Register shows how much of the net pay for each employee is on a check and how much is deposited
- choose whether or not to use Direct Deposit when processing checks; if an employee is going on vacation and needs a check early, a normal paycheck can be prepared
- multiple batch processing allows you to post multiple payrolls within a single day; a file will be created for each payroll batch
- the Check Register can be run and filed after checks are printed for a final audit trail
- use the Direct Deposit File Creation Report to give you a breakdown of each employee's account

**Note:**  
 Direct Deposit requires TRAVERSE Payroll. It has its own reports and it adds information to some standard TRAVERSE Payroll reports. You will need a modem and communications software to transmit the Direct Deposit file to the bank.



*The Direct Deposit File Creation Form is used to create the ACH file, which contains all the deposit information that is sent to the bank.*