

RESOURCE MANAGER

Providing the power to make everyday operations a snap

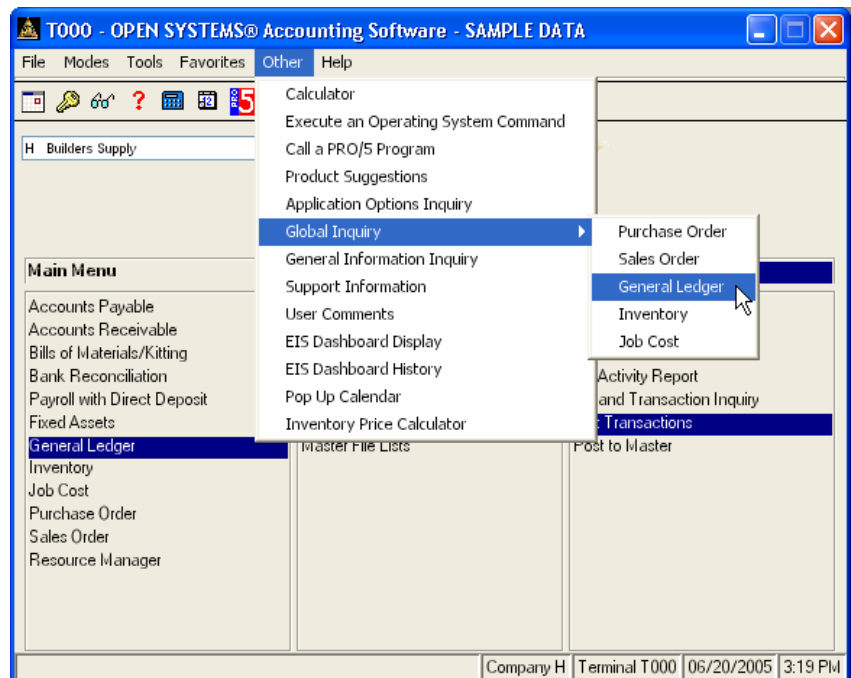
Resource Manager is required with all OPEN SYSTEMS® Accounting Software (OSAS®) applications. It provides you with simple, trouble-free installation and integration. Resource Manager includes general system services and utilities that help eliminate the need for entering intricate operating system commands, thus reducing the chance of error.

You can keep everyday operations running smoothly with Resource Manager utilities. You'll be able to use Workstation Configuration Maintenance to define system devices, set up screen colors and function keys, and establish defaults for each workstation—all to your specific needs. You determine how to track company information with Company Setup. This includes maintenance of critical information by company and for multiple companies, creating and converting data files, setting up access codes for data security, and tailoring your menus.

The Executive Information Summary capabilities of Resource Manager give you the ability to consolidate, calculate, and display summary information based on data from other OSAS applications. You can quickly pull data from any of these applications or vertical software modules. Compare information across departments, companies, years, quarters, days, or even hours and minutes.

The Global Inquiry feature gives you a simple way to drill down and through your accounting data. You can begin from any of several starting points and navigate from file to file across multiple applications with ease.

Resource Manager also offers a print management tool for OSAS called Print Manager. It lets you save your reports to a file and print them later, giving you a complete report library. You can also keep track of where users are in the system and the last menu option they used, which is especially helpful during posting and backup procedures.



OSAS Resource Manager Offers Choices and Flexibility With These Key Features

- Enjoy fast, easy access to information on key fields, codes, and IDs from predefined inquiry windows. Customize them to provide just the information you want.
- To help you make up-to-the-minute management decisions, reports are printed with time stamps in 12 or 24-hour formats.
- Enjoy true multiuser processing on multiuser networks such as Windows[®], Mac[®] OS, Linux[®] and UNIX[®].
- Run as many as nine sessions on one workstation at once. Save time by starting a post here and running a report there.
- Use the new MDI menu to run multiple tasks at one time. Run tasks in multiple companies at once.
- Easily set up shortcuts on networked computers running Windows after you install OSAS by using the Set Up Terminals function.
- Easily access Global Inquiry, regardless of the OSAS application you are currently working in. Global Inquiry allows you to locate any information you need, at any level of detail. Access data in another OSAS application file, and you won't have to exit and open multiple programs or wait for reports to print.
- View important data with inquiry windows and quickly sort it according to the key data you select. Use inquiry window math when you want to define the data to calculate statistics.
- Gain standardized access to all inquiry windows, information windows, online field help, and on-the-fly maintenance.
- Define access codes for each workstation, providing password protection. You can protect individual applications, menus, and functions. The system security file is encrypted.
- Eliminate the need for keyboard templates by using online keyboard help. You may choose whether to display the function key descriptions at the bottom of your screen.
- Be assured that your shipments and correspondence have the correct country code. A list of codes is provided, and it can be sorted by code or country name.
- Find the answers you need with scrollable help screens. Up to 999 lines of help are provided on a specific field.
- BBJ and BBX PROGRESSION/5[®] from BASIS International Ltd. provide a stable, full-featured foundation for OSAS applications to build on. They are two of the most powerful business application languages available.
- Maintain data for nearly an unlimited number of companies by using 3-character company IDs.
- A separate sample data directory is provided for learning and training purposes. In addition, you can have multiple live data directories for system flexibility and organization.
- Execute internal and external functions from anywhere within the OSAS system with a special menu that you can modify.
- Use ODBC connectivity to access centralized OSAS data through Microsoft tools such as Word and Excel as well as hundreds of other popular ODBC-compliant packages.
- Define a default location and bank ID by workstation.
- Identify missing reports through optional banner pages, which include user ID, name, report selection criteria, and date and time stamp.
- A handy pop-up calendar provides public and private reminders that can be displayed automatically when you start OSAS. Use it to create and edit dated personal and system-wide messages and view them for any date.

Resource Manager Utilities

Company Setup
Backup and Restore Utilities
Data File Allocation Report
Data File Resizing Utility
Device Configuration Maintenance
Menu Maintenance
Inquiry Window Maintenance
View File Contents Utility
Workstation Defaults
Product Suggestions (can be saved and edited through F4. You can make suggestions at any point in the system, save a file, print it out later, and fax it to Open Systems).

Platforms Supported:

Available in single-user, network and client/server versions, OSAS operates on Windows, Mac OS, Linux, UNIX, AIX[®], and Sun[®] Solaris[®] systems.

Version 7.0
OSSRM70
08/15/05